

SPLIT SETS • PLATES • CABLE BOLTS • RESIN BOLTS • STIFF BOLTS • MINING MESH



SPLIT SET MINING SYSTEMS
UNDERGROUND ROOF SUPPORT PRODUCTS

GROUND SUPPORT PRODUCT OVERVIEW

**YOUR ORIGINAL
ONE-STOP SHOP
FOR MINING
SUPPLIES**



PHOENIX METAL GROUP





CONTACT US

SPLITSET.COM.AU

HEAD OFFICE – PERTH

99-105 McDowell Street,
Welshpool, WA 6106
Ph: (08) 9458 1188
mining@splitset.com.au

TOWNSVILLE

75-81 Toll Street,
Mt Saint John QLD 4818
Ph: (07) 4774 6464
mining@splitset.com.au

BRISBANE

Building 1/131 Beenleigh Rd,
Acacia Ridge QLD 4110
Ph: (07) 3219 6108
mining@splitset.com.au

ORANGE

58 Lords Place
Orange NSW 2800
Ph: (02) 6311 1586
mining@splitset.com.au



CONTENTS

SPLIT SETS.....	4
SS47 DYMAC SPLIT SET BOLT	6
SPRING BOLTS.....	8
DEBONDED SPRING BOLTS.....	10
GEWI BOLTS.....	12
M24 REBAR BOLTS.....	14
PADDLE BOLTS	16
CABLE BOLTS	17
MINE MESH.....	19
SPLITSET MINING SYSTEMS	
EYE BOLT	20
DOMED PLATES.....	21
SPLIT SET STABILISER BOLTS	
& GEWI BOLTS	22
COMBINATION PLATES.....	23
HOLLOW SELF DRILLING	
ANCHOR SYSTEM.....	24
SPLITSET MINING SYSTEMS	
LOCKABLE SERVICE HANGER	26

SPLIT SETS

OVERVIEW

SSMS Split Set stabilisers provide immediate frictional support at the face and can be installed with either handheld or mechanized equipment, which can be post grouted with cement grouts for additional load bearing if required.

Extensive quality control processes including in house testing throughout the manufacturing process.

FEATURES

- » Easy and fast installation process with the benefit of immediate load bearing capacity
- » Elevated yield strength due to micro alloyed steel
- » Comes in self-supporting stillage packs
- » Certified to Australian standards AS1554 / AS1594 and ISO-9001
- » Available in HDG as a standard for maximum strength and efficiency
- » A ring is welded on the end in order to hold a plate to the rock surface



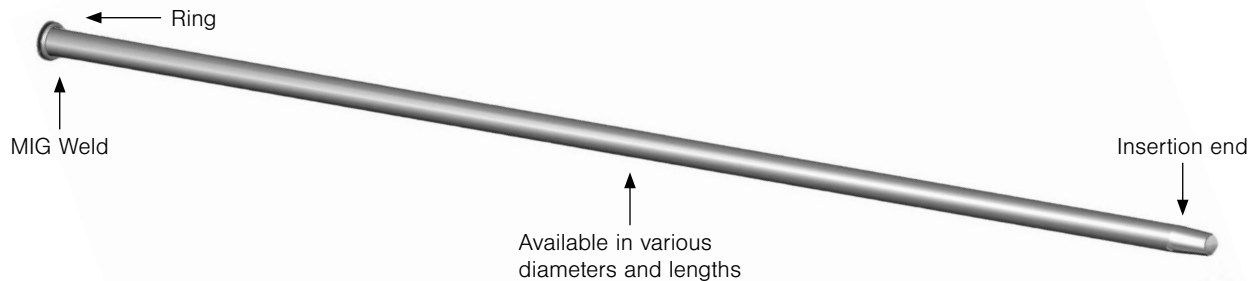
PRODUCT SPECIFICATIONS

Available Diameters (mm)	33	39	47
Available Lengths (m)	0.45– 2.4	0.9 – 2.4	0.9 – 3.0
Recommended Drill Hole Diameter (mm)	29 – 31	35 – 38	43 – 45
Yield Strength (kN)	115	117	180
Ultimate Tensile Strength (kN)	122	125	195
Pack Size	150	150	150

SSMS PART NO	DESCRIPTION
90321662	SPLIT SET SS33-450 GALV
90321670	SPLIT SET SS33-600 GALV
90321688	SPLIT SET SS33-1500 GALV
90321696	SPLIT SET SS33-1200 GALV
90321704	SPLIT SET SS33-1500 GALV
90321720	SPLIT SET SS33-1800 GALV
90321738	SPLIT SET SS33-2100 GALV
90321746	SPLIT SET SS33-2400 GALV
90321431	SPLIT SET SS39-450 GALV
90321654	SPLIT SET SS39-600 GALV
90321423	SPLIT SET SS39-900 GALV

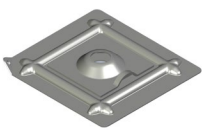
SSMS PART NO	DESCRIPTION
90321225	SPLIT SET SS39-1200 GALV
90321233	SPLIT SET SS39-1500 GALV
90321525	SPLIT SET SS39-1800 GALV
90321258	SPLIT SET SS39-2400 GALV
90322652	SPLIT SET SS46-600 GALV
90322660	SPLIT SET SS46-900 GALV
90322751	SPLIT SET SS46-1200 GALV
90322330	SPLIT SET SS46-1500 GALV
90322348	SPLIT SET SS46-1800 GALV
90321753	SPLIT SET SS46-2100 GALV
90321761	SPLIT SET SS46-2400 GALV

Split Set



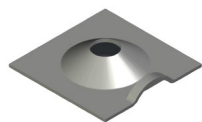
SPLIT SET ACCESSORIES

SSMS offers a large range of bolting accessories to optimize underground mining operations across all conditions. The below accessories complement the Split Set, improving its overall performance and allowing operators to customize and adapt their equipment to suit specific underground mining conditions, maximizing efficiency and output.



Combi Plates

SSMS PART NO	DESCRIPTION
89451597	SS33 300 x 280 Galv stabiliser Combi plate
89451736	SS39 300 x 280 Galv stabiliser Combi plate
89423537	SS46 300 x 280 Galv stabiliser Combi plate



Dome Plates

SSMS PART NO	DESCRIPTION
90320251	SS33 125x125 GALV DOME PLATE 4mm
90321275	SS39 150x150 GALV DOME PLATE 4mm
90322371	SS46 150x150 GALV DOME PLATE 4mm



Pull Collar

SSMS PART NO	DESCRIPTION
89717508	SS46 PULL COLLAR (PINK)
89705569	SS39 PULL COLLAR GALV
89766212	SS33 PULL COLLAR GALV



SS33 AirReg Dolly Driver Tool

SSMS PART NO	DESCRIPTION
90320028	DRIVER SS33 12 DEGREE TAPER



SS39 Dolly Driver Tool

SSMS PART NO	DESCRIPTION
90358418	SS39-T38 FEMALE



SS46 Dolly Driver Tool

SSMS PART NO	DESCRIPTION
90325497	SS46-T38 FEMALE

SS47 DYMAC

SPLIT SET BOLT

OVERVIEW

Underground hard rock mining and tunneling operations continue to experience an increase in unpredictable seismic events. SSMS has developed a market-leading adaptive ground support solution proven to perform under dynamic and seismic rock conditions. This solution has worked for multiple customers globally in some of the harshest underground environments.

The SSMS DYMAC Bolt is a (47 mm) friction bolt strengthened with a 22 mm bar and wedge configuration at the tapered end. When the Bolt is completely driven into the Hole with the shell anchor wedges engaged the SSMS Dynamic Bolt will absorb 20kJ of energy when securely fastened in the rock.

The SSMS DYMAC Bolt offers easy installation and visual identification, with coloured discs at one end of the bolt indicating bolt length.

**THE NEW SSMS SS47
DYMAC SPLITSET BOLT
FOR IMPROVED GROUND
SUPPORT PERFORMANCE.**

FEATURES

- » Optimal wedge design increases the anchorage when fully engaged, allowing for superior anchoring and bearing capacity.
- » Eliminates the requirement of resin or grouting.
- » Cost reductions identified within rehabilitation exercises.
- » Efficient single pass installation with standard jumbo attachments.
- » High tensile and shear strength combined with fully galvanised protection.
- » Integrated stopper to eliminate potential rod ejection.
- » Installation accessories available.
- » Colour coded discs to externally identify different bolt length options.

PRODUCT SPECIFICATIONS

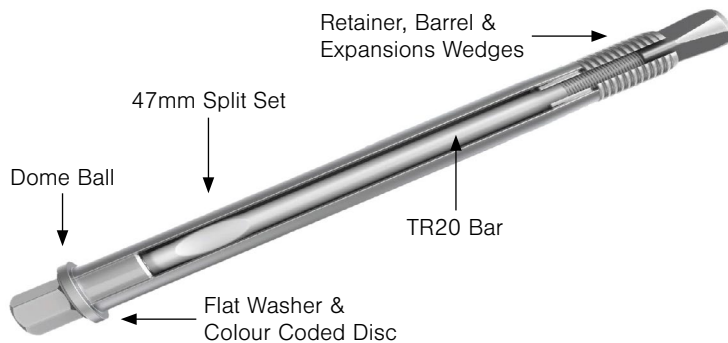
Individual Component Properties

Bar Diameter (mm)	22
Bar Elongation (%)	22
Bar Rolled Thread	M22 x 2.5 LH
Tube Thickness (mm)	2.5
Drill Bit Diameter (mm)	43-45

Bolt Properties

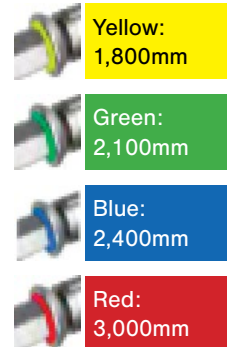
Ultimate Tensile Strength (kN)	275
Yield Strength (kN)	189
Shear Strength (calc) (kN)	252
Wedge Expansion (mm)	Max 62

SS47 Dymac Split Set Bolt



Bolt Length Size Identification System

SSMS's visual identification system delivers an accessible way to recognise the correct SSMS SS47 Dynamic Mechanical Anchor SS Bolt for operations. Coloured tabs are displayed near the blind nut allowing for easy classification of bolt length for increased safety.



SS47 DYNAMIC SPLIT SET BOLT & ACCESSORIES

SSMS offers a large range of bolting accessories to optimise underground mining operations across all conditions. The below accessories complement the SS47Dynamic Mechanical Anchor Split Set Bolt, improving its overall performance and allow operators to customise and adapt their equipment to suit specific underground mining conditions, maximising efficiency and output.



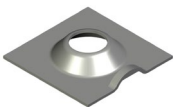
SS47 Dymac Split Set Bolt

SSMS PART NO	DESCRIPTION
DSSB4718G	SS47x1.8 DYMAC SPLITSET bolt galv
DSSB4721G	SS47x2.1 DYMAC SPLITSET bolt galv
DSSB4724G	SS47x2.4 DYMAC SPLITSET bolt galv
DSSB4730G	SS47x3.0 DYMAC SPLITSET bolt galv



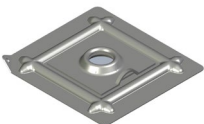
Pull Collar

SSMS PART NO	DESCRIPTION
89717508	SS46 PULL COLLAR (PINK)



Dome Plate

SSMS PART NO	DESCRIPTION
89451188	SS47 DOMED PLATE; GALV 150x150x6 mm
89451189	SS47 DOMED PLATE; GALV 200x200x6 mm



Combi Plate

SSMS PART NO	DESCRIPTION
90332459	SS47 COMBI PLATE: 300x280/ Plate 150x150x6 galv
90332461	SS47 COMBI PLATE: 300x280/ Plate 150x150x8 galv



Bolt Driver Tool

SSMS PART NO	DESCRIPTION
BDT38-200	MD BOLT T38 DRIVER TOOL
BDT38-900	900mm DOLLY/DRIVER T38 THREAD

Note: Driver tool lengths can be made to order

SPRING BOLTS

OVERVIEW

SSMS Spring Bolts are continuously threaded, high strength steel bar used in underground mining support applications. Spring Bolts are manufactured with a specially designed spring wire attached to the end. The spring is designed to assist in the installation of rock bolts with chemical anchors.

FEATURES

- » Enhanced mixing of the chemical anchor
- » Comes with a pinned nut and domed ball washer
- » Increased load transfer capabilities
- » Eliminates 'gloving' effect
- » Available plain or with galvanized corrosion protection

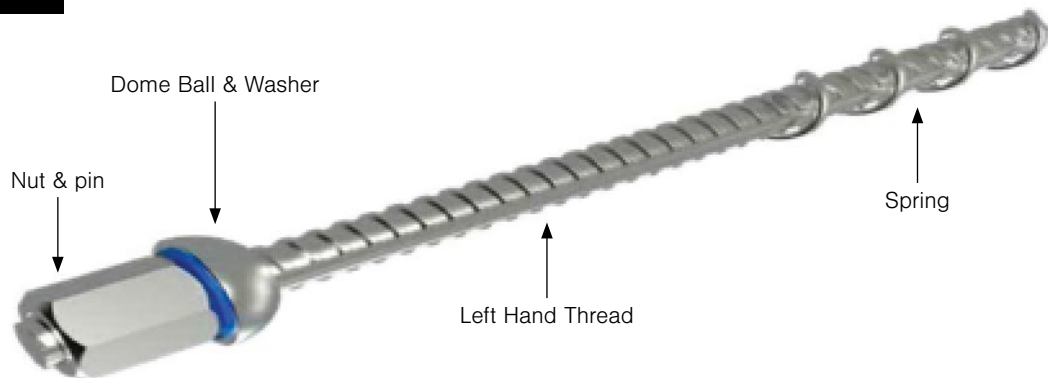


PRODUCT SPECIFICATIONS

	T20 Spring Bolt	T25 Spring Bolt
Thread Type	Left Hand Continuous Thread	Left Hand Continuous Thread
Bolt Diameter (mm)	20	25
Bolt Length (mm)	1200 - 3600	1200 - 3600
Spring Length (mm)	500	500
Nut breakout Torque (Nm)	190-230	190-230
Mass Per Metre (kg/m)	2.5	3.95
Yield Strength (kN)	175	235
Ultimate Tensile Strength (kN)	210	295
Standard	AS4671, AS4680	AS4671, AS4680

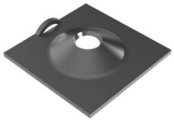
SSMS PART NO	DESCRIPTION
89451514	T20 Spring Bolt 1.8m Galv C/W Dome Bal & Pin Nut
89451552	T20 Spring Bolt 2.1m Galv C/W Dome Bal & Pin Nut
89451504	T20 Spring Bolt 2.4m Galv C/W Dome Bal & Pin Nut
89451505	T20 Spring Bolt 3.0m Galv C/W Dome Bal & Pin Nut
89443158	Spring Bolt T25 x 1.2m Galv C/W Dome Bal & Pin Nut
89443160	Spring Bolt T25 x 2.4m Galv C/W Dome Bal & Pin Nut
89443165	Spring Bolt T25 x 3.0m Galv C/W Dome Bal & Pin Nut

Spring Bolt



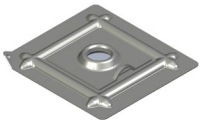
SPRING BOLT ACCESSORIES

SSMS offers a large range of bolting accessories to optimize underground mining operations across all conditions. The below accessories complement the Spring Bolt, improving its overall performance and allowing operators to customize and adapt their equipment to suit specific underground mining conditions, maximizing efficiency and output.



Volcano Plates

SSMS PART NO	DESCRIPTION
89451185	VOLCANO PLATE 150x150x8mmGALV



Volcano Plates

SSMS PART NO	DESCRIPTION
90332453	COMBI Plate 300x280/VOLCANO PLATE 150x150x6mmGALV



Hanger Nut

SSMS PART NO	DESCRIPTION
89450682	GEWI BAR T20mm M/HANG NUT T/BAR GALV



Pull Ring

SSMS PART NO	DESCRIPTION
90320892	T20 GEWI BAR PULL COLLAR ADAPTER FIT SS46 CLAW



Dolly Driver Tool

SSMS PART NO	DESCRIPTION
90369935	DRIVER T38 X900mm SOCKET FEMALE 36AF

Note: Driver tool lengths can be made to order

DEBONDED SPRING BOLTS

OVERVIEW

SSMS Spring Bolts come in several debonded lengths. The debonded region of these bolts has the ability to absorb more energy by deforming axially and radially within the debonded region. The spring assists in mixing chemical anchors for enhanced efficiencies.

FEATURES

- » Enhanced mixing of the chemical anchors
- » High energy dissipation due to debonded region
- » Increased load transfer capabilities
- » Comes with a pinned nut and domed ball washer
- » Available plain or with galvanized corrosion protection



PRODUCT SPECIFICATIONS

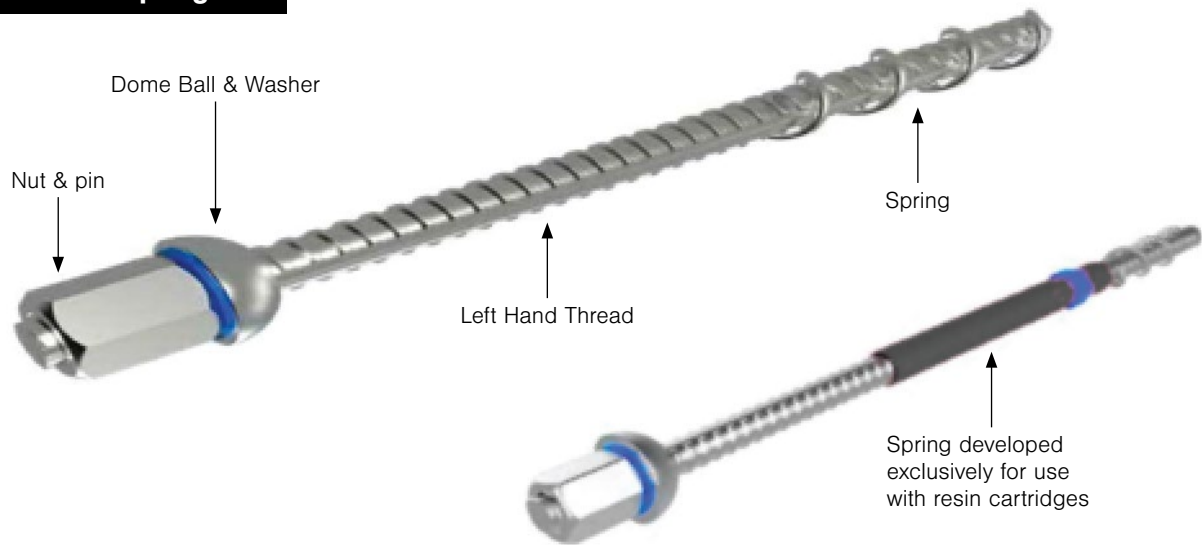
Thread Type	Left Hand Continuous Thread
Bolt Diameter (mm)	20
Bolt Length (mm)	1200 - 3600
Spring Length (mm)	500
Nut breakout Torque (Nm)	190-230
Mass Per Metre (kg/m)	2.5
Yield Strength (kN)	175
Ultimate Tensile Strength (kN)	210
Standard	AS4671, AS4680

Standard Debonded Lengths (bolt length in mm)

	Minimum Value (mm)	Maximum Value (mm)
2100	1000	1200
2400	1000	1400
3000	1000	1800

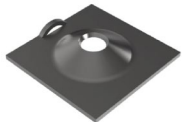
SSMS PART NO	DESCRIPTION
89451504DB	T20 Spring Bolt 2.4m Galv C/W Dome Bal&Pin Nut DB
89451505DB	T20 Spring Bolt 3.0m Galv C/W Dome Bal&Pin Nut DB
89443160DB	T25 Spring Bolt 2.4m Galv C/W Dome Bal&Pin Nut DB

Debonded Spring Bolt



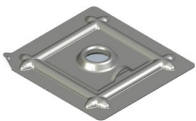
DEBONDED SPRING BOLT ACCESSORIES

SSMS offers a large range of bolting accessories to optimize underground mining operations across all conditions. The below accessories complement the Spring Bolt Debonded, improving its overall performance and allowing operators to customize and adapt their equipment to suit specific underground mining conditions, maximizing efficiency and output.



Volcano Plates

SSMS PART NO	DESCRIPTION
89451185	VOLCANO PLATE 150x150x8mmGALV



Volcano Plates

SSMS PART NO	DESCRIPTION
90332453	COMBI Plate 300x280/VOLCANO PLATE 150x150x6mmGALV



Hanger Nut

SSMS PART NO	DESCRIPTION
89450682	GEWI BAR T20mm M/HANG NUT T/BAR GALV



Pull Ring

SSMS PART NO	DESCRIPTION
90320892	T20 GEWI BAR PULL COLLAR ADAPTER FIT SS46 CLAW



Dolly Driver Tool

SSMS PART NO	DESCRIPTION
90369935	DRIVER T38 X900mm SOCKET FEMALE 36AF

Note: Driver tool lengths can be made to order

GEWI BOLTS

OVERVIEW

SSMS Gewi Bolts are continuously threaded, high strength steel bar used in underground mining support applications. Generally used with resin anchors or with cementitious grouts.

The ribbed pattern of the bolt assists with mixing the chemical anchors during installation.

FEATURES

- » Can be installed with resin or cementitious grout
- » Comes with a pinned nut and domed ball washer
- » Left hand thread for most hard rock surfaces
- » Good load transfer properties
- » Available plain or with galvanized corrosion protection



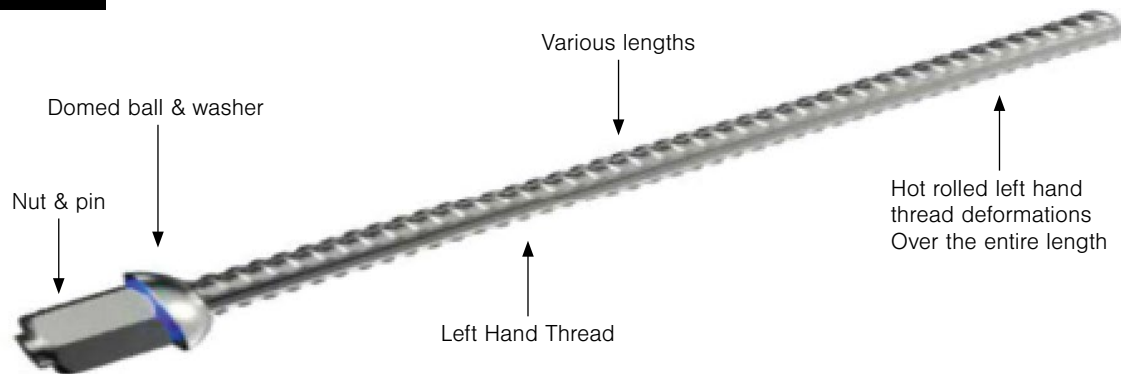
PRODUCT SPECIFICATIONS

	T20 Gewi Bolt	T25 Gewi Bolt
Thread Type	Left Hand Continuous Thread	Left Hand Continuous Thread
Bolt Diameter (mm)	20	25
Bolt Length (mm)	1200 - 3600	1200 - 3600
Mass Per Metre (kg/m)	2.5	3.95
Nut breakout Torque (Nm)	190-230	190-230
Yield Strength (kN)	175	235
Ultimate Tensile Strength (kN)	210	295
Standard	AS4671, AS4680	AS4671, AS4680

SSMS PART NO	DESCRIPTION
89457688	GEWI BAR 1200x20mm GALV LHT
89456922	GEWI BAR 1500x20mm GALV LHT
89457521	GEWI BAR 1800x20mm GALV LHT
89451448	GEWI BAR 2400x20mm GALV LHT
89466975	GEWI BAR 3000x20mm GALV LHT
90321021	GEWI BAR 1200x25mm GALV
89451486	GEWI BAR 1800x25mm GALV
90321023	GEWI BAR 2400x25mm GALV
90321025	GEWI BAR 3000x25mm GALV

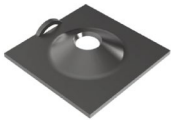
Gewi Bar Lengths can be cut to order on customers request

Gewi Bolt



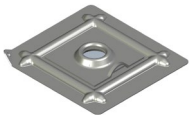
GEWI BOLT ACCESSORIES

SSMS offers a large range of bolting accessories to optimize underground mining operations across all conditions. The below accessories complement the Gewi Bolt, improving its overall performance and allowing operators to customize and adapt their equipment to suit specific underground mining conditions, maximizing efficiency and output.



Volcano Plates

SSMS PART NO	DESCRIPTION
89451185	VOLCANO PLATE 150x150x8mmGALV



Volcano Plates

SSMS PART NO	DESCRIPTION
90332453	COMBI Plate 300x280/VOLCANO PLATE 150x150x6mmGALV



Hanger Nut

SSMS PART NO	DESCRIPTION
89450682	GEWI BAR T20mm M/HANG NUT T/BAR GALV



Pull Ring

SSMS PART NO	DESCRIPTION
90320892	T20 GEWI BAR PULL COLLAR ADAPTER FIT SS46 CLAW



Dolly Driver Tool

SSMS PART NO	DESCRIPTION
90369935	DRIVER T38 X900mm SOCKET FEMALE 36AF



Gewi Bar Spin Adapters

SSMS PART NO	DESCRIPTION
89461165	ROCK BOLT T20 6mm BAR SPIN ADAPTER
90320126	DRIVER 300x36mm A/F x 7/8"

M24 REBAR BOLTS

OVERVIEW

SSMS M24 Rebar Bolts provide higher toughness and ductility for improved performance in mines with stress corrosion cracking and high localized horizontal stresses.

Available with right-hand or left-hand thread along with a full range of M24 Rebar Bolt accessories.

FEATURES

- » Can be installed with resin or cementitious grout
- » Comes with a pinned nut and domed ball washer
- » Left Hand Thread for most hard rock surfaces
- » Full range of M24 accessories and tools available
- » Available plain or with galvanized corrosion protection
- » Paddles - Optional



PRODUCT SPECIFICATIONS

Thread Type	M24 Left Hand Continuous Thread
Bolt Length (mm)	1200 - 3600
Nut breakout Torque (Nm)	190-230
Mass Per Metre (kg/m)	3.6
Yield Strength (kN)	245
Ultimate Tensile Strength (kN)	309
Paddles (Optional) If required	30 ± 1mm
Standard	AS4671, AS4680

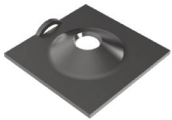
SSMS PART NO	DESCRIPTION
89442890	Chemical Paddle Bolt 22mm x 2400mtr Galv
89442893	Chemical Paddle Bolt 22mm x 3000mtr Galv
89443161	Chemical Paddle Bolt T24 x 1800Mtr Galv
89443166	Chemical Paddle Bolt 24mm x 2400mtr Galv

M24 Rebar Bolts



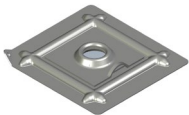
M24 REBAR BOLT ACCESSORIES

SSMS offers a large range of bolting accessories to optimize underground mining operations across all conditions. The below accessories complement the M24 Rebar Bolt, improving its overall performance and allowing operators to customize and adapt their equipment to suit specific underground mining conditions, maximizing efficiency and output.



Volcano Plates

SSMS PART NO	DESCRIPTION
89451185	VOLCANO PLATE 150x150x8mm GALV



Volcano Plates

SSMS PART NO	DESCRIPTION
90332453	COMBI Plate 300x280/VOLCANO PLATE 150x150x6mm GALV



Hanger Nut

SSMS PART NO	DESCRIPTION
89452402	NUT 24mm L/H 3mm PITCH SERVICE HANGER



Pull Ring

SSMS PART NO	DESCRIPTION
90320887	M24 LH THREAD BAR PULL COLLAR ADAPTER FIT SS46 CLAW



Dolly Driver Tool

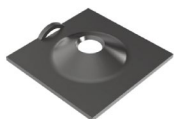
SSMS PART NO	DESCRIPTION
90369935	DRIVER T38 X 900mm SOCKET FEMALE 36AF

Note: Driver tool lengths can be made to order

PADDLE BOLTS

PADDLE BOLT ACCESSORIES

SSMS offers a large range of bolting accessories to optimize underground mining operations across all conditions. The below accessories complement the Paddle Bolt, improving its overall performance and allowing operators to customize and adapt their equipment to suit specific underground mining conditions, maximizing efficiency and output.

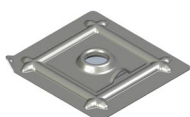


Volcano Plates

SSMS PART NO
89451185

DESCRIPTION

VOLCANO PLATE 150x150x8mm GALV



Volcano Plates

SSMS PART NO
90332453

DESCRIPTION

COMBI Plate 300x280/VOLCANO PLATE 150x150x6mm GALV



Hanger Nut

SSMS PART NO
89452402

DESCRIPTION

NUT M24 L/H 3mm PITCH SERVICE HANGER



Pull Ring

SSMS PART NO
90320887

DESCRIPTION

M24 LH THREAD BAR PULL COLLAR ADAPTER FIT SS46 CLAW



Dolly Driver Tool

SSMS PART NO
90369935

DESCRIPTION

DRIVER T38 X 900mm SOCKET FEMALE 36AF

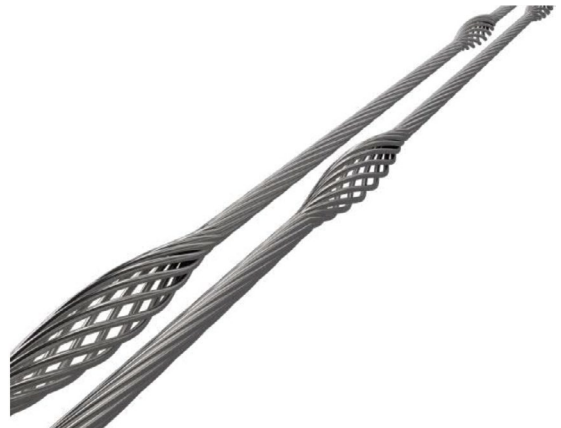
Note: Driver tool lengths can be made to order

CABLE BOLTS

OVERVIEW

SSMS provides a full suite of Cable Bolts and accessories. Cable Bolts can be produced as pre-cut lengths or as reels up to 700m. Tensioners, plates, barrels, and wedges also form part of our ground support product portfolio.

For up hole applications, Cable Bolts are fitted with a spring wire “Fish hook” to hold the Cable Bolt up the hole.



FEATURES

- » Available in plain or bulbed configuration
- » High tensile pre-stressed wire
- » Comes packaged on pallets
- » 600 metre reels for mechanized installation (up to 700)
- » Debonded cables are available for dynamic conditions



PRODUCT SPECIFICATIONS

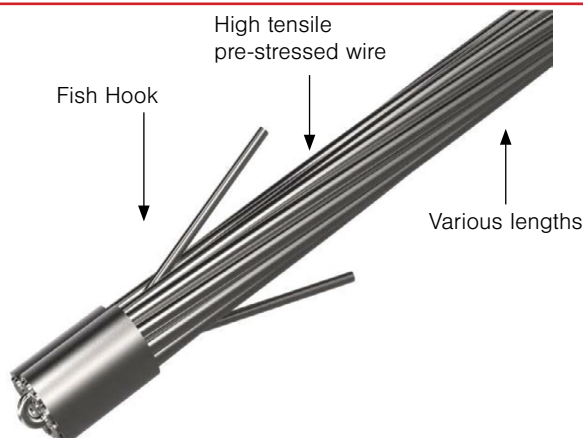
Diameter	15.2
Available Strands	Single / Twin
Bulbs / Metre	1 per strand set
Cross Sectional Area (mm ²)	143 / 286
Mass per Metre (kg/m)	1.13 / 2.26
Available Lengths (m)	4.5 / 6.3 / 8.3 / 9.3 / 12.3 / 20.3 / 600 / 700
Yield Strength (kN)	Single 240 / Twin 480
Ultimate Tensile Strength (kN)	Single 250 / Twin 500
Standards	AS1311

SSMS PART NO	DESCRIPTION
89450624	4.5m Twin Strand
89450871	6.3m Twin Strand
89451721	8.3m Twin Strand
89451702	9.3m Twin Strand
89451413	12.3m Twin Strand
89451720	20.3m Twin Strand

SSMS PART NO	DESCRIPTION
89450001	6.3m Single Strand
89451723	8.3m Single Strand
89450812	9.3m Single Strand
89451615	12.3m Single Strand
19531745	Cable Bolt 600m Single
19531749	Cable Reel 15.2mm Plain Strand 700m

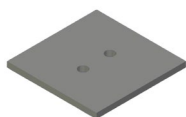
17.8mm Cable Bolt can be made to order on customers request

Cable Bolts



CABLE BOLT ACCESSORIES

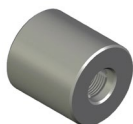
SSMS offers a large range of bolting accessories to optimize underground mining operations across all conditions. The below accessories complement Cable Bolts, improving its overall performance and allowing operators to customize and adapt their equipment to suit specific underground mining conditions, maximizing efficiency and output.



FLAT PLATE

SSMS PART NO	DESCRIPTION
89452659	BEARING PLATE (2 HOLE) 200x200x8mm
89451792	BEARING PLATE (2 HOLE) 200x200x10mm
89451862	BEARING PLATE (2 HOLE) 200x200x12mm

Flat Bearings Plates can be made to order on customers request



BARREL & WEDGE

SSMS PART NO	DESCRIPTION
89426498	ANCHOR BARREL & WEDGE GFCABGP15 BLACK
89426494	ANCHOR, BARREL & WEDGE 17.8MM

MINE MESH

OVERVIEW

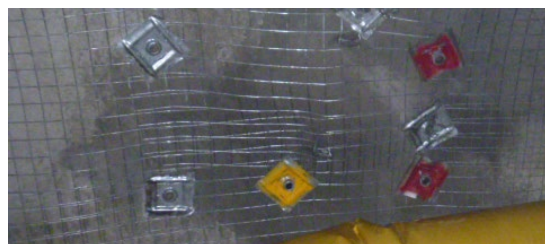
SSMS mine mesh provides superior surface support for all underground geotechnical standards.

Our mine mesh is fully compliant to AS4680 standards and capable of withstanding and challenging excess energy forces created under the most hostile conditions.

Best practice, fully compliant, trustworthy mine mesh for the most demanding underground applications.

FEATURES

- » Designs to suit customer specific mine drive dimensions and ground conditions
- » Suitable for shotcrete applications
- » “Clean Cut” mesh edges for operator safety
- » Customised sheets available upon request



PRODUCT SPECIFICATIONS

Wire Diameter (mm)	Wire Aperture (mm)	Surface Treatment (HDG g/m2)		Elongation (%)	
		Minimum	Typical	Minimum	Typical
5.0	100x100	85	100	1.5	4.0
5.6	100x100	85	100	1.5	4.0
		Minimum		Typical	
Wire Tensile Strength (kN)		13.5		15	
Wire Tensile Strength (MPa)		550		610	
Weld Shear Strength (kN)		8.6		14.6	
Weld Shear Strength (MPa)		350		595	
Standards		AS4671:2001			

SSMS PART NO	DESCRIPTION
90340001	3000x2400x5.6 GALV MINING MESH
90340031	4000x2400x5.6 GALV MINING MESH
90340138	4500x2400x5.6 GALV MINING MESH
90340032	4800x2400x5.6 GALV MINING MESH
90340010	3000x2400x5.0 GALV MINING MESH
90340030	4000x2400x5.0 GALV MINING MESH
90340062	4500x2400x5.0 GALV MINING MESH
90340040	4800x2400x5.0 GALV MINING MESH

Mesh sheet sizes can be made to order on customer's request (Blk & Galv)

SPLIT SET MINING SYSTEMS EYE BOLT

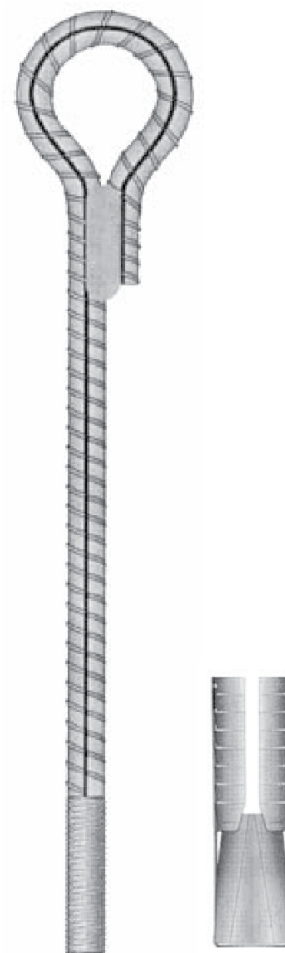
OVERVIEW

Eyebolts are generally used for hanging of lightweight services in mining applications. SSMS supplies 24mm eye bolts that come with right-hand thread barrels and wedges.

The eye diameter is 75mm with a minimum 150mm long M24 thread on the other end.

FEATURES

- » Used for hanging services in mining applications
- » Available with thread M24 x 150mm to suit a 24mmx45mm expansion shell mechanical anchor
- » Eye lapped back along the bolt shank with a minimum 50mm fillet weld on both sides to AS1554.1-1991
- » Available in both galvanized and black



PRODUCT SPECIFICATIONS

Bar Diameter (mm)	16-24
Total Length (mm)	600-1200
Thread Type (Typical)	M24 RHT
Thread Length (mm)	150
Weight (kg)	4.4 (900mm)
Yield Strength (kN)	190
Ultimate Tensile Strength (kN)	240

SSMS PART NO	DESCRIPTION
89450571	EYE BOLT 16X0600 THREADED
89451801	EYE BOLT 20x0600 THREADED
89451439	EYE BOLT 24X0900 THREADED
89451397	EYE BOLT 24X1200 THREADED
89451970	EYE BOLT 24X1500 THREADED

Eye Bolts can be made to order on customers request

EYE BOLT ACCESSORIES

SSMS offers a large range of bolting accessories to optimize underground mining operations across all conditions. The below accessories complement the Eye Bolt, improving its overall performance and allowing operators to customize and adapt their equipment to suit specific underground mining conditions, maximizing efficiency and output.



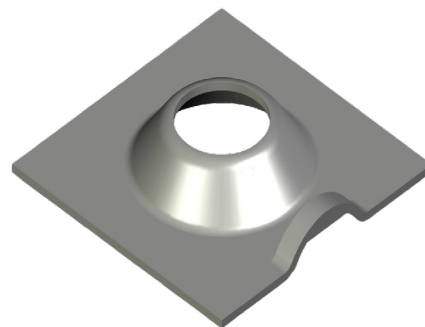
EXPANSION SHELL

SSMS PART NO	DESCRIPTION
89451124	EXPANSION SHELLS 24x45 R/H ANCHOR BLACK
89451363	EXPANSION SHELLS 20x36 R/H ANCHOR BLACK
89450647	EXPANSION SHELLS 16x32 R/H ANCHOR BLACK

DOMED PLATES

OVERVIEW

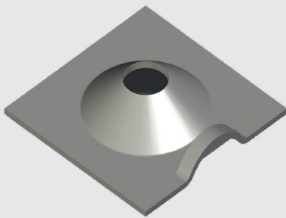
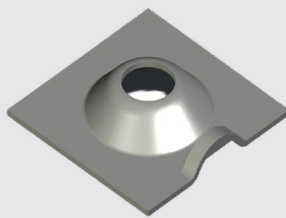
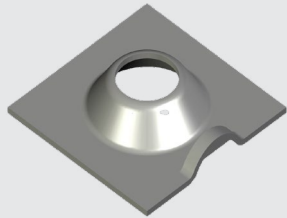
Our Domed Plates come in various sizes to suit 33mm, 39mm and 46mm Split Set Stabilisers. Domed plates provide additional strength by stabilising the alignment of the bolt. It is an ideal solution to overcome minor surface irregularity issues. They come with a rated hanger lug to support a 6mm shackle.



FEATURES

- » High load bearing characteristics
- » Rated hanger lug to support 6mm shackle (FOS) – 200Kgs
- » Larger surface area for added stability
- » Available plain or with galvanized corrosion protection

PRODUCT SPECIFICATIONS

Physical Properties	Dome Plate	Dome Plate	Dome Plate
Hole Diameter (mm)	36	42	49
Top Plate Size (mm)	125 x 125	150 x 150	150 x 150
Top Plate Thickness (mm)	4	4	4 - 10
Product Image			
	90320251	90321275	90322371

SSMS PART NO	DESCRIPTION
90320251	SS33 125x125 GALV DOME PLATE 4mm
90321275	SS39 150x150 GALV DOME PLATE 4mm
90322371	SS46 150x150 GALV DOME PLATE 4mm
90332427	SS39 200x200 GALV DOME PLATE 4mm
90332425	SS46 200x200 GALV DOME PLATE 4mm

SPLIT SET STABILISER BOLTS & GEWI BOLTS

ACCESSORIES

SSMS offers a large range of bolting accessories to optimize underground mining operations across all conditions.



Splitset Stabilisers

SSMS PART NO	DESCRIPTION
90321688	SPLIT SETSPLIT SET SS33-0900 GALV
90321423	SPLIT SETSPLIT SET SS39-0900 GALV
90322660	SPLIT SETSPLIT SET SS46-0900 GALV



Gewi Bolts

SSMS PART NO	DESCRIPTION
89456922	T20x1500mm GALV GEWI BAR
89457521	T20x1800mm GALV GEWI BAR
89451448	T20x2400mm GALV GEWI BAR
89466975	T20x3000mm GALV GEWI BAR



Gewi Bolts

SSMS PART NO	DESCRIPTION
99443155	Ball Washer M24 Galv
89461555	Gewi Bar T20x36mm AF HBX Nut Galv

Gewi bar can be made to order on customers request

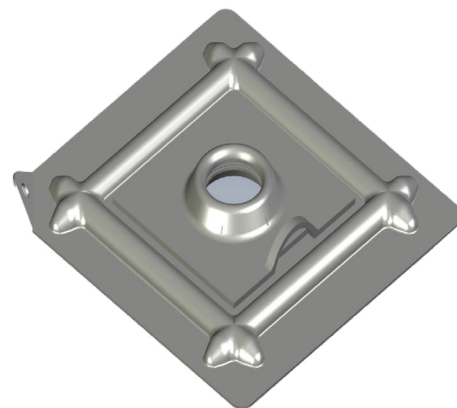
COMBINATION PLATES

OVERVIEW

SSMS DUO and COMBI plates are high load bearing capacity plates, designed to support and spread the load of the Dome plate to the Strata.

COMBI plates provide additional strength by stabilising the alignment of the bolt. It provides additional protection to products used in harsh environments.

They come with a rated hanger lug to support a 6mm shackle.



FEATURES

- » High load bearing characteristics
- » Rated hanger lug to support 6mm shackle (FOS) – 200Kgs
- » Larger surface area for added stability
- » Available plain or with galvanized corrosion protection

PRODUCT SPECIFICATIONS

Physical Properties	COMBI PLATE 33	COMBI PLATE 39	COMBI PLATE 46
Hole Diameter (mm)	33	39	46
Base Plate Size (mm)	300 x 280	300 x 280	300 x 280
Base Plate Thickness (mm)	1.6	1.6	1.6
Top Plate Size (mm)	125 x 125	150 x 150	150 x 150
Top Plate Thickness (mm)	4	4	4 - 10
Product Image			

SSMS PART NO	DESCRIPTION
89426787	SS33 300x280 GALV STABILISER DUO PLATE
89451736	SS39 300x280 GALV STABILISER COMBI PLATE
89421180	SS46 300x280 GALV STABILISER COMBI PLATE

HOLLOW SELF DRILLING ANCHOR SYSTEM

Hollow Self Drilling Anchor System

The anchor rod made of high-quality tubes with continuous cold-rolled drill thread (standard left-hand rope or trapezoidal thread)

Protection tube, if required

Grout

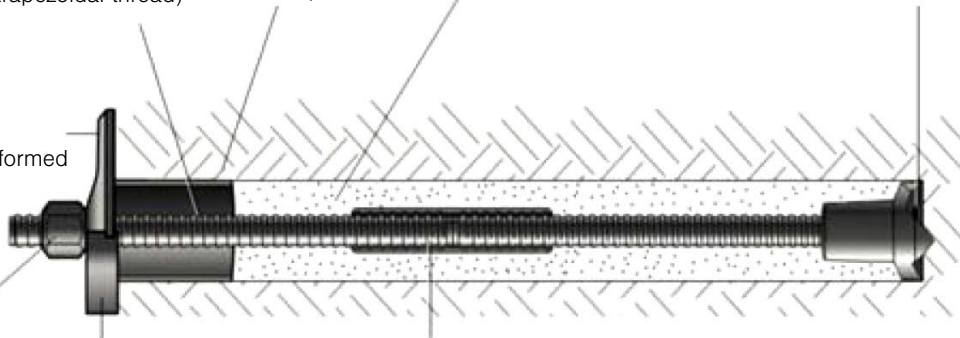
Various drill bits enable quick drilling of boreholes in diverse soil and rock conditions

Domed plate made of cold-formed flat steel

Nut

Flat plate

Coupler with centre stop enabling direct end-to-end bearing between rods thereby minimizing energy loss during drilling



OVERVIEW

The Self Drilling Anchor Systems is mainly used in slope stabilization, tunneling and pre-support foundations and micro piles. It can be installed in weak rocks, loose soil, and sand stone. Especially in difficult ground that is hard to install ground support once the hole has been drilled. The unconsolidated ground conditions favor the self-drilling anchor bolt technique for fast and simple method of installation compared to the traditional method. Dome Plates can be supplied should the SDA Bar require tensioning.

FEATURES

- » Installation using Grout or Resin
- » Installation into poor ground
- » Corrosion resistant
- » Up Hole SDA Retention device



SDA BAR

Technical Data	Unit	R25N	R32L	R32N	R32S	R38N	R51L	R51N	T76N	T76S
Outside Diameter (mm)	mm	25	32	32	32	38	51	51	76	76
Internal Diameter (mm)	mm	12	21	17	17	21	36	33	51	47
Cross Sectional Area	mm ²	292	356	363	440	700	713	993	2000	2400
Ultimate Load	kN	200	260	280	360	500	550	800	1600	1900
Yield Load	kN	150	200	230	280	400	450	630	1200	1500
Weight	Kg/m	2.30	2.80	3.30	3.40	5.50	6.30	7.80	16.50	19.00
Thread Type	ISO10208					T76N/T76S – T International Standard				
Type of Steel	EN10083-1									
Thread (left/right hand)	Left or Right									
Length (m)	1m, 2m, 3m, 4m, 5m, 6m					T76N/T76S – 1m, 2m, 3m, 4m				

SDA NUT

Technical Data	Unit	R25N	R32L	R32N	R32S	R38N	R51L	R51N	T76N	T76S
Key Size (mm)	mm	41	46	46	46	50	75	75	100	100
Length (mm)	mm	35	45	45	65	60	70	70	80	80
Weight	Kg/m	0.25	0.35	0.35	0.53	0.50	1.50	1.50	2.66	2.66
Thread Type	ISO10208					ISO 10208	ISO1720		T Int Standard	
Type of Steel	CK45		EN10083-1			CK45				
Thread (left/right hand)	Left or Right									


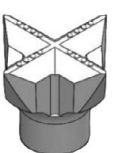




SDA COUPLING

Technical Data	Unit	R25N	R32L	R32N	R32S	R38N	R51L	R51N	T76N	T76S
Outside Diameter (mm)	mm	36	42	42	42	52	63	63	95	97
Length (mm)	mm	150	145	190	190	220	140	200	200	220
Weight	Kg/m									
Thread Type	ISO10208					ISO 10208	ISO1720		T Int Standard	
Type of Steel	EN10083-1									
Thread (left/right hand)	Left or Right									

OPTIONS OF ANTI CORROSION:

- » Epoxy Coating
- » Hot-Dipped Galvanised Standard ISO 1461

SDA BIT & GROUT ADAPTOR

					
EX Hardened Cross Bit for loose to dense ground conditions	EXX TC Cross Bit for Soft to medium rock formations	ESF Hardened button Bits for unconsolidated rock with boulders	ESD	ESSF TC Button Bit for medium rock formations	Grout Adaptor

GENERAL GUIDE ANCHOR BIT DIAMETERS (GUIDE ONLY)

Thread Size	R25	R32	R38	R51	T76
Outside Diameter (mm)	42 / 51	51 / 76 / 90	76 / 90 / 100	90 / 100 / 115	130 / 150 / 170

SPLIT SET MINING SYSTEMS LOCKABLE SERVICE HANGER

OVERVIEW

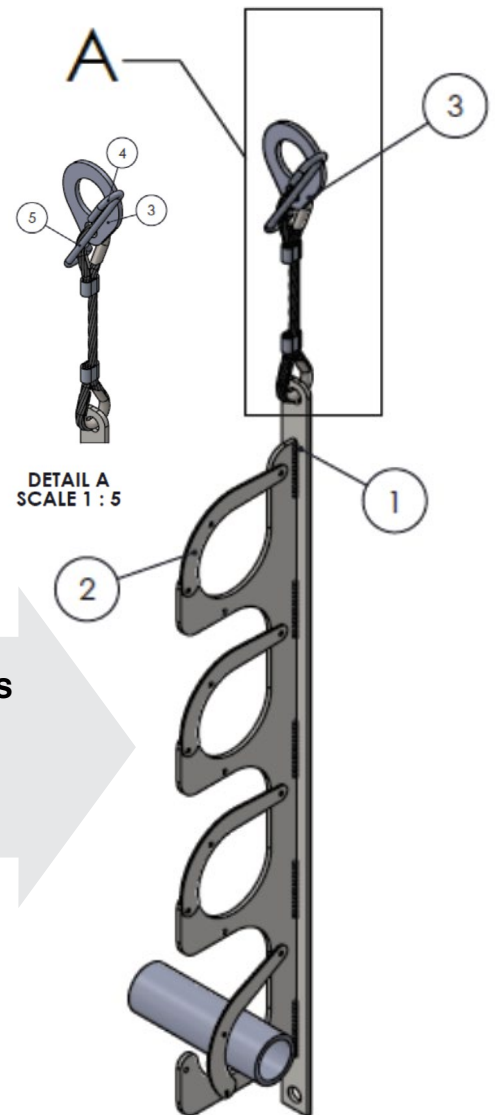
Designed by mining professionals, the SSMS Lockable service hanger is constructed from 6mm Galvanized steel that can outlast your mining operation.

The hanger can be mounted any angle thanks to multiple anchor points, the additional hook allows the miner to reuse the service hanger when required.

The lockable latching system will ensure service lines are always fully secured providing maximum safety for your workers.

FEATURES

- » 6mm Hot Dipped Galvanised Construction
- » 1 Tonne load NATA rated Lanyard
- » Lockable Steel Bar Arm
- » Additional Hook for optimum use
- » Can be mounted vertically or horizontally (kit option available)
- » 6mm washer to be used with SS46 SPLITSET bolt for installation



PART NO	DESCRIPTION	MATERIAL	QTY
1	4 hook Bracket	HDG	1
2	Clip	HDG	4
3	6mm Plate	HDG	1
4	DIA 8 Hook	HDG	1
5	10mm Wire Rope	HDG	1



Safety & Quality Certified



1 Tonne Rated Steel Cable



Improved Worker Safety

SSMS PART NO	DESCRIPTION
89451893	3 HOOK SERVICE HANGER – HDG
89451891	3 HOOK SERVICE HANGER – HDG WITH SMALL TOP HOOK
89451895	4 HOOK SERVICE HANGER – HDG
89451900	4 HOOK SERVICE HANGER – HDG WITH SMALL TOP HOOK
89451894	SERVICE HANGER PIN WASHER



OTHER DIVISIONS OF THE PHOENIX METAL GROUP



PHOENIXMETAL.COM.AU

Phoenix Metalform is one of Australia's leading manufacturers of sheet metal building products including Stud Framing, Battens, Angles, Purlins, Core Trays, Perforated Metals,

Laser Cutting, Stud, Purlin, Pressing, Bending. The company also provides general fabrication services to industry, producing steel and custom sheet metal products.



PHOENIXDECORATIVEMETALS.COM.AU

Phoenix Decorative Metals is a premier manufacturer of Decorative Metal products. With over 20 years experience in the field products include Decorative Cladding, Perforated Metals,

Privacy Screens, Balustrade, Fencing Infill Panels, Gates, Appliance Enclosures, Metal Art and Shade Structures.



BURNDYCSS.COM.AU

Burndy Cable Support Systems is Australia's leading manufacturer for Electrical Cable Supports. Always striving to meet the growing demands of a sophisticated market, the Burndy range has evolved to provide a genuine

one stop shop with the ability to satisfy your cable support needs. Cable Ladder, Cable Tray, Cable Mesh, Ladder Tray, Engineering Support, Design, Cable Duct, Channel, Fittings & Fasteners.